



275|8TH ST

NEW LUXURY APARTMENT SPECIFICATIONS
NAPLES FLORIDA



ORAL REPRESENTATION CANNOT BE RELIED UPON AS CORRECTLY STATING REPRESENTATIONS OF THE DEVELOPER. FOR CORRECT REPRESENTATIONS, MAKE REFERENCE TO THIS BROCHURE AND TO THE DOCUMENTS REQUIRED BY SECTION 718.503, FLORIDA STATUTES, TO BE FURNISHED BY A DEVELOPER TO A BUYER OR LESSEE.



275 8TH AVE S BUILDING

Settled in the heart of Olde Naples, The 275 Building is a short walk to 5th Avenue's fine boutiques, cafes, renowned restaurants and the beautiful sandy beaches on the Gulf of Mexico.



LUXURIOUS LIVING

LOCATION

The 275 building is a boutique styled mixed use project just three short blocks to the lively 5th Avenue in Downtown Naples. You are centrally located near all the area shops, cafes and restaurants plus, just a few more blocks to the beautiful beaches Naples is famous for.

This new development consists of just two exclusive condominiums, created by Naples very own, MHK Architects, with professionally designed interiors by Charles Design Studio.

275|8TH ST



SECOND FLOOR UNIT
3 BEDROOM | 3.5 BATH
GREAT ROOM + PARTNERS
DEN

UNDER AIR - 3,321 sqft
BALCONY - 1,353 sqft

TOTAL GROSS AREA -
4,674 sqft

THIRD FLOOR UNIT
3 BEDROOM | 3.5 BATH
GREAT ROOM + PARTNERS
DEN

UNDER AIR - 3,321 sqft
BALCONY - 1,337 sqft

TOTAL GROSS AREA -
4,658 sqft

ORAL REPRESENTATION CANNOT BE RELIED UPON AS CORRECTLY STATING REPRESENTATIONS OF THE DEVELOPER. FOR CORRECT REPRESENTATIONS, MAKE REFERENCE TO THIS BROCHURE AND TO THE DOCUMENTS REQUIRED BY SECTION 718.503, FLORIDA STATUTES, TO BE FURNISHED BY A DEVELOPER TO A BUYER OR LESSEE.



KITCHEN

KITCHEN DETAIL

- Sub-Zero panel ready freezer drawers
- Sub-Zero panel ready fridge
- Wolf M Series Oven + Wolf M series speed oven
- Cove panel ready dishwasher
- Wolf gas cooktop
- Stone Countertop with stone end panel with waterfall edge
- Stone back splash

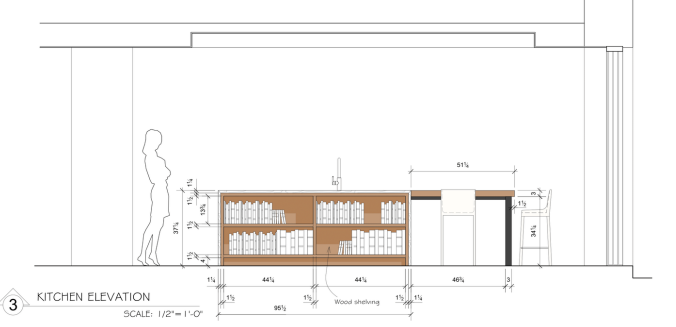
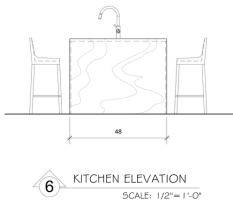
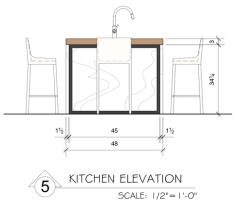
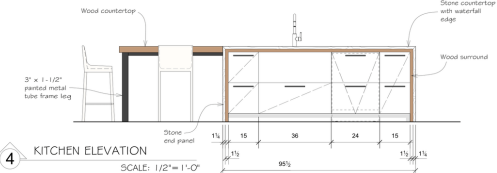
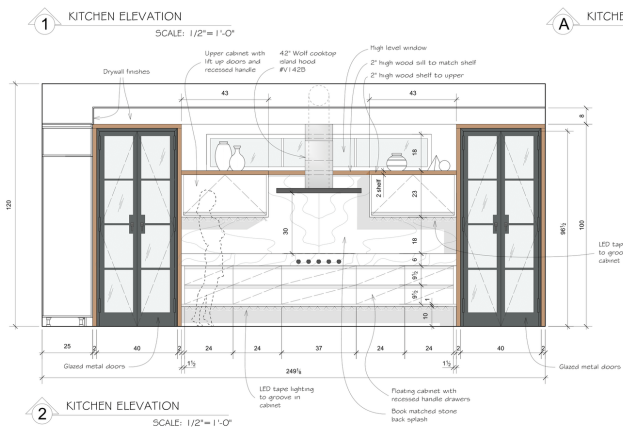
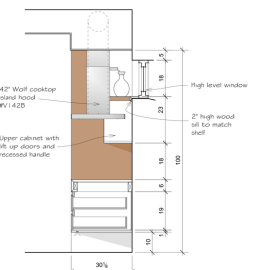
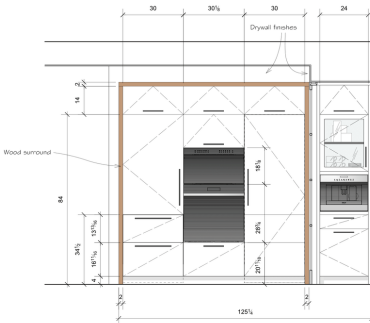
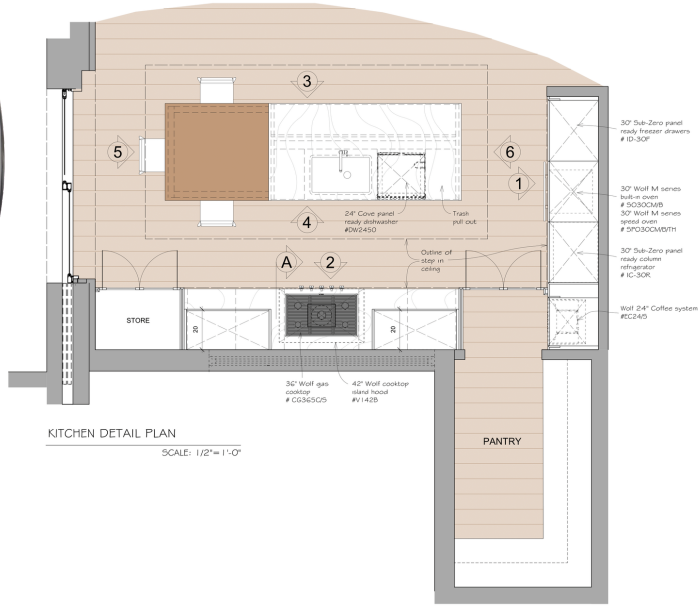


KITCHEN



KITCHEN

KITCHEN INTERIOR DESIGN DRAWINGS



*ALL PRODUCT PRICING, AVAILABILITY, DESCRIPTIONS, IMAGES, AND SPECIFICATIONS ARE SUBJECT TO CHANGE AT ANY TIME WITHOUT NOTICE.

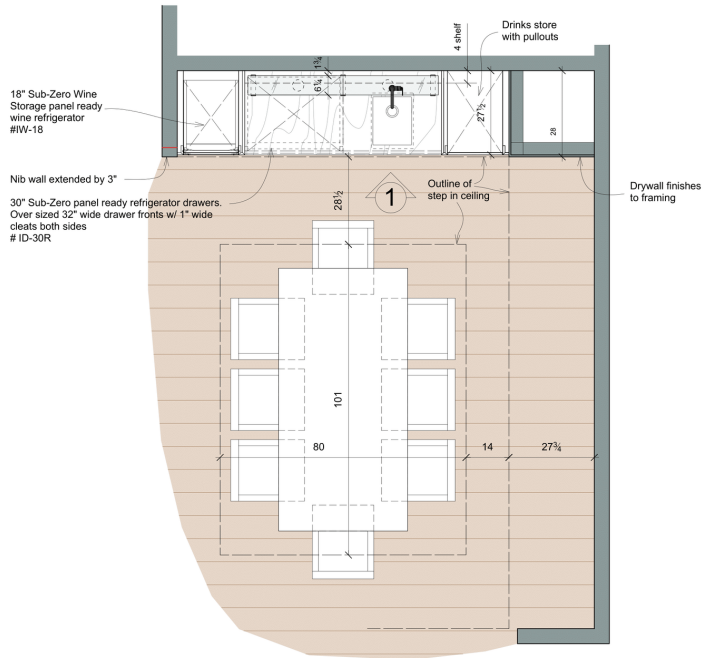


DINING & WET BAR

DINING DETAIL

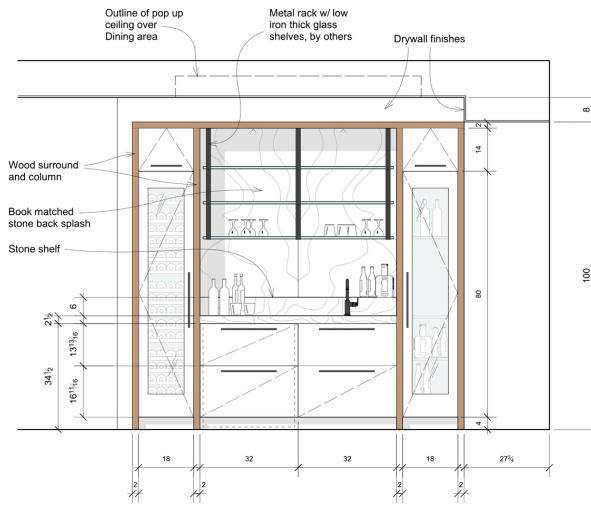
- Custom design wet bar built-ins
- Wine storage refrigerator
- Sub-Zero bar refrigerator drawers
- Metal frame glassware design
- Custom stone countertop and backsplash

DINING & WET BAR INTERIOR DESIGN DRAWINGS



WET BAR DETAIL PLAN

SCALE: 1/2" = 1'-0"



1 WET BAR ELEVATION

SCALE: 1/2" = 1'-0"





GREAT ROOM



GREAT ROOM



MASTER BEDROOM

MASTER DETAIL

- Generously sized Master Bedroom
- Custom sliding doors to private balcony
- Southern exposure
- European oak wood floors throughout
- Large His & Hers walk in closets

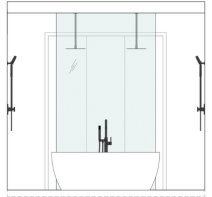
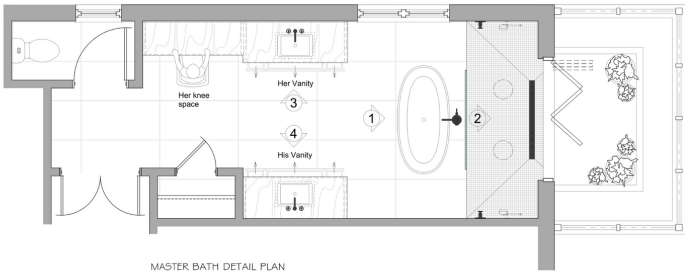


MASTER BATHROOM

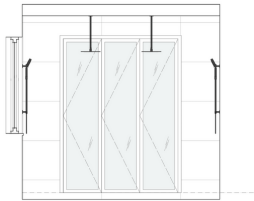
MASTER DETAIL

- Marble look large scale tile
- Custom wood vanities
- Freestanding soaking tub
- Walk-in Shower with Rainfall Shower heads
- Private outdoor green space

MASTER BATHROOM



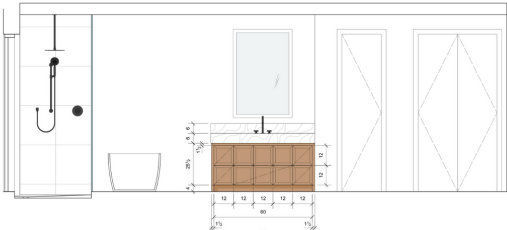
1 MASTER BATH ELEVATION
SCALE: 1/2" = 1'-0"



2 MASTER BATH ELEVATION
SCALE: 1/2" = 1'-0"



3 MASTER BATH ELEVATION
SCALE: 1/2" = 1'-0"

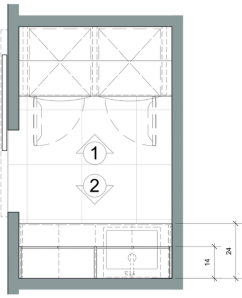


4 MASTER BATH ELEVATION
SCALE: 1/2" = 1'-0"

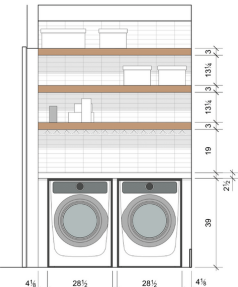


*ALL PRODUCT PRICING, AVAILABILITY, DESCRIPTIONS, IMAGES, AND SPECIFICATIONS ARE SUBJECT TO CHANGE AT ANY TIME WITHOUT NOTICE.

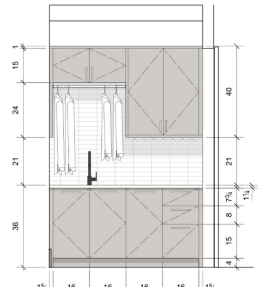
LAUNDRY ROOM & POWDER BATH



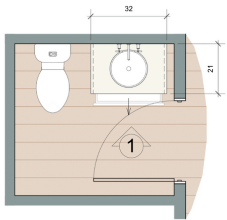
LAUNDRY DETAIL PLAN
SCALE: 1/2" = 1'-0"



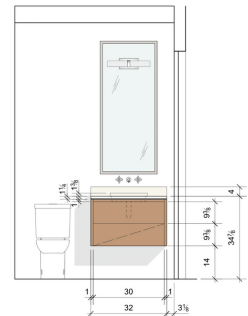
1 LAUNDRY ELEVATION
SCALE: 1/2" = 1'-0"



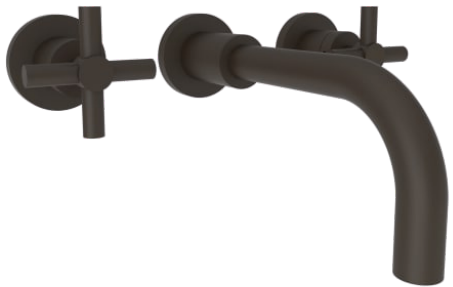
2 LAUNDRY ELEVATION
SCALE: 1/2" = 1'-0"



POWDER BATH DETAIL PLAN
SCALE: 1/2" = 1'-0"

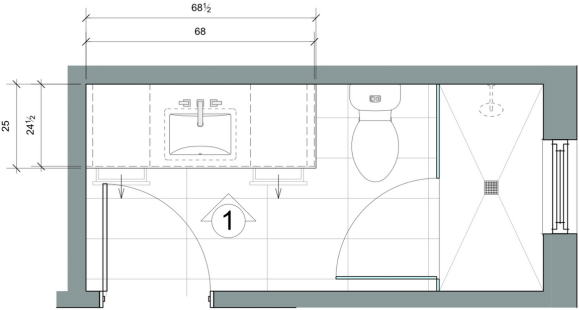


1 POWDER BATH ELEVATION
SCALE: 1/2" = 1'-0"

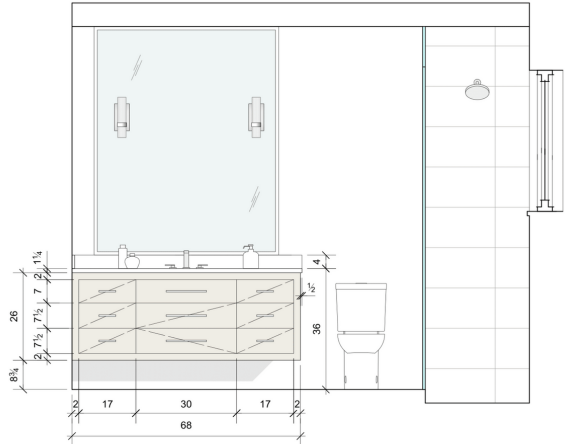


*ALL PRODUCT PRICING, AVAILABILITY, DESCRIPTIONS, IMAGES, AND SPECIFICATIONS ARE SUBJECT TO CHANGE AT ANY TIME WITHOUT NOTICE.

BATHROOM TWO



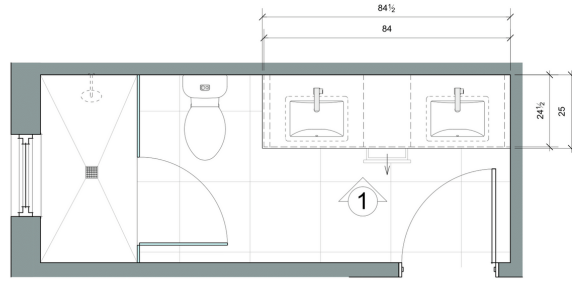
BATH 2 DETAIL PLAN
SCALE: 1/2" = 1'-0"



BATH 2 ELEVATION
SCALE: 1/2" = 1'-0"

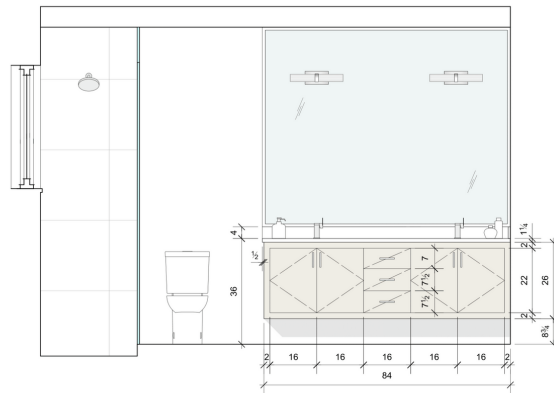
*ALL PRODUCT PRICING, AVAILABILITY, DESCRIPTIONS, IMAGES, AND SPECIFICATIONS ARE SUBJECT TO CHANGE AT ANY TIME WITHOUT NOTICE.

BATHROOM THREE



BATH 3 DETAIL PLAN

SCALE: 1/2" = 1'-0"



BATH 3 ELEVATION

SCALE: 1/2" = 1'-0"



275 PROPERTY FEATURES



ARCHITECTURE BY MHK ARCHITECTURE AND PLANNING

INTERIORS DESIGNED BY CHARLES DESIGN STUDIO

RESERVED PARKING, GUEST PARKING + PRIVATE GARAGE

PRIVATE ELEVATOR ENTRANCE

LARGE OPEN LIVING CONCEPT WITH 10' CEILINGS

EXPANSIVE TERRACE W/WESTERN EXPOSURE

IMPACT GLASS WINDOWS & DOORS

LEGNO BASTONE EUROPEAN WIDE PLANK WOOD FLOORING

SUBZERO + WOLF LUXURY KITCHEN APPLIANCES

NEWPORT BRASS, ROHL, & HANSGROHE UPGRADED FIXTURES

POMPEII QUARTZ COUNTERTOPS

MARBLE & CERAMIC DECORATIVE TILE

CUSTOM DESIGNED CABINETRY BY MARCUS JELLEY

ASHLEY NORTON HARDWARE

SOLID FOUR PANEL INTERIOR DOORS

HOME AUTOMATION, SECURITY AND LIGHTING CONTROL



*ALL PRODUCT PRICING, AVAILABILITY, DESCRIPTIONS, IMAGES, AND SPECIFICATIONS ARE SUBJECT TO CHANGE AT ANY TIME WITHOUT NOTICE.



MEET THE DEVELOPER

ADAM SMITH | NAPLES REDEVELOPMENT

Adam has over 30 years of development and construction experience, creating over 300 homes across the region, from South Naples to Bonita Springs. Over the last decade, Naples ReDevelopment has centered much of its focus in the Olde Naples and Downtown Naples Design Districts. Adam's keen eye for real estate opportunities using a more innovative approach led to various residential, commercial and restaurant development.



NAPLES
REDEVELOPMENT
COMMERCIAL | INDUSTRIAL | RESIDENTIAL

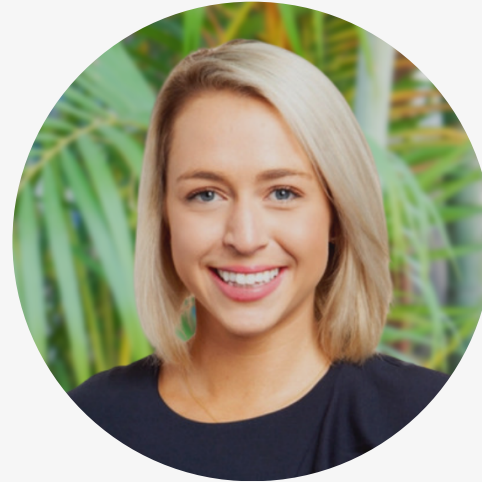
MEET YOUR AGENTS



LISA HERNANDEZ

REAL ESTATE AGENT

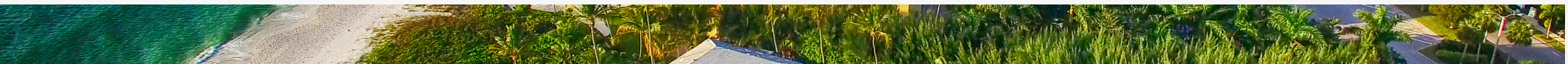
LISA@themarkitgroup.com
(239) 293 - 4652



ELENA DAVIS

REAL ESTATE AGENT

ELENA@themarkitgroup.com
(904) 377 - 6647





TWO LUXURY UNITS

THE 275 BUILDING

COMING SOON

UNIT 201:

3 BEDROOM | 3.5 BATH
PARTNERS DEN + GREAT ROOM
4,674 SQ. FT.
PRIVATE GARAGE
PRIVATE ENTRANCE
SECOND FLOOR

UNIT 301:

3 BEDROOM | 3.5 BATH
PARTNERS DEN + GREAT ROOM
4,658 SQ. FT.
PRIVATE GARAGE
PRIVATE ENTRANCE
THIRD FLOOR